

# **SAFETY JOGGER**

## **SAFETY SHOES**



08/2014

[www.safetyjogger.com](http://www.safetyjogger.com)

# about Safety Jogger

Safety Jogger was founded in 2001 as a part of the Cortina-group, which is with its 25 million pairs of shoes one of the largest European shoe distributors. An experience of more than fifty years in the development and production of shoes gave to Safety Jogger the possibility to become in no time an international brand. Next to our safety shoes we also offer you today a line of gloves at the best price/quality combination.

La marque Safety Jogger a été créée en 2001 et fait partie du groupe Cortina, qui est l'un des plus grands importateurs de chaussures en Europe avec 25 millions de paires vendues par an. Le groupe Cortina possède une expérience de plus de 50 ans dans le développement et la production de chaussures. La puissance du groupe Cortina a permis à la marque Safety Jogger de se mettre rapidement au même niveau que d'autres grandes marques et d'avoir aujourd'hui une dimension internationale. Aujourd'hui vous trouvez dans notre gamme de produits, des chaussures de sécurité, ainsi que des gants de travail, et ceci tout en vous garantissant la meilleure relation prix/qualité.

Safety Jogger werd gelanceerd in 2001 als een onderdeel van de Cortina-groep, met 25 miljoen paar schoenen één van Europa's grootste verdelers. De meer dan vijftig jaar lange ervaring in de ontwikkeling en productie van schoenen, gaf Safety Jogger de mogelijkheid om snel uit te groeien tot een merk met internationale weerklank. Vandaag verdeelt Safety Jogger naast veiligheidsschoenen ook werkhandschoenen, steeds aan de beste prijs/kwaliteitsverhouding.

Die Marke Safety Jogger wurde 2001 gegründet und ist eine Unternehmenssparte der Cortina-Gruppe, die mit jährlich 25 Millionen Paar verkauften Schuhen einer der größten Schuhimporteure in Europa ist. Dank fünfzigjähriger Erfahrung in der Entwicklung und Produktion von Schuhen wurde Safety Jogger schnell eine Marke mit internationalem Renommee. Heutzutage bietet Safety Jogger neben Sicherheitsschuhen auch Arbeitshandschuhe zum besten Preis-Leistungsverhältnis an.



# safety shoes

Safety shoes are the most important equipment in any activity. The shoes serve as your prime connection to life itself. Without safe and comfortable shoes for your feet, you can be exposed to all sorts of accidents and the chance of enjoying your activity is jeopardized. Therefore, choosing Safety Jogger Patrick safety shoes is the right choice.



- ➔ Excellent quality
- ➔ Competitive prices
- ➔ High gross margin for our dealers
- ➔ Protection of your profit and market share by working with advised minimum selling prices to end users
- ➔ Only sold by specialized dealers
- ➔ Guaranteed that your selected models are always on stock
- ➔ Trendy & timeless design



**Best Price  
Always on Stock  
Best Quality**

## Extreme comfort anatomic insole

Air ventilation system insole

## Anti perforation SJ FLEX midsole

Extra flexible  
anti-perforation sole

## Composite toecap

Extra lightweight and  
strong toecap

Extra light, extra flexible and extra strong. Those are the three keywords that are combined in one shoe due to the use of a Anti perforation SJ FLEX midsole and a composite toe.

Anti perforation SJ FLEX is an innovative technology that combines high strength with light weight. Anti perforation SJ FLEX has proved his quality in different applications.

Now, we used the Anti perforation SJ FLEX innovation in a complete range of safety shoes which make them safer, stronger, lighter, more flexible and more comfortable than his steel brothers.

Safety Jogger brings shoes with a breathable pre-moulded EVA insole, designed to give maximum comfort and air control.

Have a look at our collection and discover which shoes are made with these new technical features.





## Shock absorber

Safety Jogger brings shoes with a Shock Absorber, especially developed and created to have the best absorption of the heel energy. This Shock Absorber creates a soft and maximum walk comfort during working days.





# anti-slip

Slip resistant work shoes from Safety Jogger that meet the SRC industry standards. SRC combines the benefits of SRA and SRB. SRA - tested on ceramic tile wetted with dilute soap solution; SRB - tested on smooth steel with glycerol.



**“PREMIUM**  
TOP QUALITY / TOP COMFORT

EN ISO 20345  
Euronorm



### Pre-moulded latex insole



Water resistant uppers  
Empeigne imperméable  
Wasserundurchlässiges Lederobermaterial  
Waterbestendig bovenleder



Anti-static shoe  
Chaussure antistatique  
Antistatisch  
Antistatische schoen



Heel energy absorption  
Absorption d'énergie au talon  
Energieabsorption der Ferse  
Energie absorberende hiel



Anti-slipping sole  
Semelle antidérapante  
Rutschhemmende Sohle  
Antislip zool



Anti perforation steel / SJ Flex insole  
Semelle acier / antiperforation SJ Flex  
Durchtrittsichere Stahlsole / SJ Flex Zwischensohle  
Anti perforereerbare stalen zool / SJ Flex binnenzool



Oil and fuel resistant sole  
Semelle résistante aux huiles et carburants  
Öl- und benzinbeständige Sohle  
Olie en benzine bestendige zool



Steel toe cap / Composite toe cap  
Embout en acier/ Embout en Composite  
Stahlkappe / Compositekappe  
Stalen top / Composiet top



Breathable leather uppers  
Empeigne aérée  
Atmungaktives Obermaterial  
Ademactief bovenleder



ESD - Electro Static Discharge  
ESD - Décharge électrostatique  
ESD - Elektrostatische Entladung  
ESD - Electro Statische Ontlading



HRO - Heat Resistant Outsole  
HRO - Semelle résistant à la chaleur  
HRO - Hitzebeständige Laufsohle  
HRO - Hitzebeständige Zool

premium S3

elite S3



**flexible, light  
& strong**

Anti perforation  
SJ FLEX midsole  
& composite toecap

Upper	Full Grain 2,6mm leather
Sole	PU/Rubber
Toecap	Composite
Midsole	Anti perforation SJ FLEX
Size Range	38-48
Category	S3 / SRC HRO ESD
Lining	Leather/Coolmax
Insole	Latex



S3



SJ FLEX

Composite







## flexible, light & strong

Anti perforation  
SJ FLEX midsole  
& composite toecap



Upper	Full Grain 2,6mm leather
Sole	PU/Rubber
Toecap	Composite
Midsole	Anti perforation SJ FLEX
Size Range	37-47
Category	S3 / SRC HRO ESD
Lining	Mesh Nylon/Coolmax
Insole	Latex



S3



cosmos S3

nova S3



**flexible, light  
& strong**

Anti perforation  
SJ FLEX midsole  
& composite toecap

Sole	PU/TPU
Toecap	Composite
Midsole	Anti perforation SJ FLEX
Size Range	38-47
Category	S3 / SRC
Lining	Cambrella
Insole	Premoulded



S3



SJ FLEX

Composite





geos S3



**flexible, light  
& strong**

Anti perforation  
SJ FLEX midsole  
& composite toecap

S3



galaxy S3



Sole	PU/TPU
Toecap	Composite
Midsole	Anti perforation SJ FLEX
Size Range	38-47
Category	S3 / SRC
Lining	Cambrella
Insole	Premoulded



power2 S3

force2 S3



**flexible, light  
& strong**

Anti perforation  
SJ FLEX midsole  
& composite toecap

Sole	PU/Rubber
Toecap	Composite
Midsole	Anti perforation SJ FLEX
Size Range	38-47
Category	S3 / SRC HRO HI
Lining	Mesh Nylon
Insole	Premoulded



S3



SJ FLEX

Composite





EOS S3

aura S3



**flexible, light  
& strong**

Anti perforation  
SJ FLEX midsole  
& composite toecap

Sole	PU/PU
Toecap	Composite
Midsole	Anti perforation SJ FLEX
Size Range	36-47
Category	S3 / SRC ESD
Lining	Mesh Nylon
Insole	Premoulded



S3





**flexible, light  
& strong**

Anti perforation  
SJ FLEX midsole  
& composite toecap

Sole	PU/Rubber
Toecap	Composite
Midsole	Anti perforation SJ FLEX
Size Range	38-47
Category	S3 / SRC HRO
Lining	Mesh Nylon
Insole	Premoulded



S3







## flexible, light & strong

Anti perforation  
SJ FLEX midsole  
& composite toecap

Sole	PU/PU
Toecap	Composite
Midsole	Anti perforation SJ FLEX
Size Range	38-47
Category	S1P / SRC ESD
Lining	Mesh Nylon
Insole	Premoulded



S1P



**flexible, light  
& strong**

Anti perforation  
SJ FLEX midsole



Sole	Phylon + Air Unit
Toecap	Steel
Midsole	Anti perforation SJ FLEX
Size Range	38-47
Category	S1P / SRA
Lining	Mesh Nylon
Insole	Premoulded



S1P



SJ FLEX



mountain S1P



**flexible, light  
& strong**

Anti perforation  
SJ FLEX midsole  
& composite toecap

**S1P**



valley S1P



Sole	PU/PU
Toecap	Composite
Midsole	Anti perforation SJ FLEX
Size Range	38-47
Category	S1P / SRC
Lining	Mesh Nylon
Insole	Premoulded



X2000 S3



X2020P S3



	X2000	X2020P
Sole		PU/PU
Toecap		Steel
Midsole		Steel
Size Range	38-47	37-47
Category		S3 / SRC
Lining		Mesh Nylon
Insole		Premoulded



S3





climber S3



jumper S3



	CLIMBER	JUMPER
Sole	PU/PU	
Toecap	Steel	
Midsole	Steel	
Size Range	38-47	37-47
Category	S3 / SRC	
Lining	Mesh Nylon	
Insole	Premoulded	

S3



saturnus S1P



kronos S1P



Sole	PU/TPU
Toecap	Steel
Midsole	Steel
Size Range	36-47
Category	S1P / SRC
Lining	Mesh Nylon
Insole	Premoulded



S1P





senna S3

lauda S3



**RACING  
LINE**

**flexible, light  
& strong**

Anti perforation  
SJ FLEX midsole  
& composite toecap

**S3**



**SJ FLEX**

**Composite**



Sole	Rubber
Toecap	Composite
Midsole	Anti perforation SJ FLEX
Size Range	40-47
Category	S3 / SRC
Lining	Mesh Nylon
Insole	Premoulded

isis S3

ceres S3



**Lady Line**  
safety shoe for women

**flexible, light  
& strong**

Anti perforation  
SJ FLEX midsole  
& composite toecap

Sole	Rubber
Toecap	Composite
Midsole	Anti perforation SJ FLEX
Size Range	36-42
Category	S3 / SRC
Lining	Mesh Nylon
Insole	Premoulded



S3



SJ FLEX

Composite



bestlady S3



bestgirl S3

**Lady Line**  
safety shoe for women



S3



	BESTLADY	BESTGIRL
Sole		PU/PU
Toecap		Steel
Midsole		Steel
Size Range	35-42	36-42
Category		S3 / SRC
Lining		Mesh Nylon
Insole		Premoulded



X1100N S3



X1110 S3



Sole	PU/PU
Toecap	Steel
Midsole	Steel
Size Range	38-47
Category	S3 / SRC
Lining	Cambrella
Insole	Premoulded



S3





bestboy S3



bestrun S3



S3



	BESTBOY	BESTRUN
Sole		PU/PU
Toecap		Steel
Midssole		Steel
Size Range	35-48	36-47
Category		S3 / SRC
Lining		Mesh Nylon
Insole		Premoulded



bestfit S1P



Sole	PU/PU
Toecap	Steel
Midsole	Steel
Size Range	36-47
Category	S1P / SRC
Lining	Cambrella
Insole	Premoulded



S1P





bestsun S1P



S1P



Sole	PU/PU
Toecap	Steel
Midsole	Steel
Size Range	38-47
Category	S1P / SRC
Lining	Cambrella
Insole	Premoulded

safetyboy S1P

first  
price

safetyrun S1P



order by  
12 pairs per size

Sole	PU
Toecap	Steel
Midsole	Steel
Size Range	36-47
Category	S1P / SRC
Lining	Mesh Nylon
Insole	Premoulded



S1P





bestboot S3



Warm lining



Sole	PU/PU
Toecap	Steel
Midsole	Steel
Size Range	36-47
Category	S3 / SRC
Lining	Fur
Insole	Premoulded



S3



X0500 S2

SAFETY SHOES



Sole	PU/PU
Toecap	Steel
Midsole	-
Size Range	35-47
Category	S2 / SRC
Lining	Cambrella
Insole	Premoulded



S2



GLOVES



X0600 S3



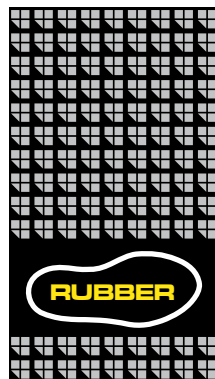
S3



Sole	PU/PU
Toecap	Steel
Midsole	Steel
Size Range	36-47
Category	S3 / SRC
Lining	Cambrella
Insole	Premoulded



bestlight



SRC

bestlight



Anti slip



Sole	EVA + Rubber
Toecap	-
Midsole	-
Size Range	36-46
Category	-
Lining	-
Insole	Premoulded



X0700 SB



SB



Sole	PU/PU
Toecap	Steel
Midsole	-
Size Range	35-47
Category	SB / SRC
Lining	Cambrella
Insole	Premoulded





poseidon S4

Sole	PVC
Toecap	Steel
Midsole	-
Size Range	36-47
Category	S4 / SRA
Lining	-
Insole	-



hercules S5

Sole	PVC
Toecap	Steel
Midsole	Steel
Size Range	36-47
Category	S5 / SRA
Lining	-
Insole	-





sjsock



Material	75% cotton
	23% polyester
	2% elastic
Sizes	39-42
	43-47

thermocool



Material	41% cotton
	33% thermocool
	20% Nylon
	3% X-static
	3% elastane
Sizes	40-43
	44-47



Perfect socks for working in normal or hot weather. The THERMO COOL-part optimises temperature and coolness of the foot. The AIRPLUS-ventilationssystem cools the lower leg and provides the necessary comfort. Using STRETCH-material on the front of the foot, this sock has a perfect fit.

The ESD norm for these socks is only valid in combination with safety shoes with ESD norm.

# Standard EN 388: 2003

## Gloves Giving Protection from Mechanical Risks.

This standard applies to all kinds of protective gloves in respect of physical and mechanical aggressions caused by abrasion, blade cut, puncture and tearing. Protection against mechanical hazards is expressed by a pictogram followed by four numbers (performance levels), each representing test performance against a specific hazard.

## Gants de protection contre les risques mécaniques

Cette norme s'applique à tous les types de gants de protection en rapport avec les agressions physiques et mécaniques causées par l'abrasion, la coupure par lame, la déchirure et la perforation. La protection contre les risques mécaniques est exprimée par un pictogramme suivi de quatre chiffres (correspondant aux niveaux de performance), chacun représentant un résultat de test contre un risque spécifique.

## Handschoenen die beschermen tegen mechanische risico's

Deze norm is van toepassing op alle types van handschoenen die bescherming bieden tegen fysische en mechanische gevaren als gevolg van schuren, snijden, perforeren en scheuren. De bescherming tegen mechanische gevaren wordt aangeduid door een pictogram gevolgd door vier cijfers (prestatieniveaus) waarbij elk cijfer overeenstemt met de testresultaten voor een specifiek risico.

## Handschuhe zum Schutz vor mechanischen Risiken

Diese Norm gilt für alle Arten von Handschuhen zum Schutz vor physischen oder mechanischen Verletzungen durch Abrieb, Klingen, Stiche oder Risse. Die Schutzfunktion gegen mechanische Verletzungen wird mit einem Piktogramm und vier Ziffern (Leistungsindikatoren) angezeigt, sie weisen auf die jeweiligen Leistungstestergebnisse in Verbindung mit einem spezifischen Risiko hin.

- a. Resistance to abrasion: based on the number of cycles required to abrade through the sample glove.
- b. Blade cut resistance: based on the number of cycles required to cut through the sample at a constant speed.
- c. Tear resistance: based on the amount of force required to tear the sample.
- d. Puncture resistance: based on the amount of force required to pierce the sample with a standard sized point.

- a. La résistance à l'abrasion: est déterminée par le nombre de cycles d'abrasion nécessaires pour user l'échantillon du gant.
- b. La résistance à la coupure par lame: est déterminée par le nombre de cycles nécessaires pour couper l'échantillon à une vitesse constante.
- c. La résistance à la déchirure: est la force nécessaire pour déchirer l'échantillon.
- d. La résistance à la perforation: est la force nécessaire pour percer l'échantillon avec un poinçon standard.

- a. Schuurweerstand: gebaseerd op het aantal cycli dat nodig is om door het handschoenstaal te schuren.
- b. Snijweerstand: gebaseerd op het aantal cycli dat nodig is om bij een constante snelheid door het handschoenstaal te snijden.
- c. Scheurweerstand: gebaseerd op de kracht die nodig is om het handschoenstaal te scheuren.
- d. Perforatieweerstand: gebaseerd op de kracht die nodig is om het handschoenstaal met een punt van standaardafmetingen te doorboren.

- a. Abriebfestigkeit: Wert basiert auf der Anzahl der erforderlichen Testzyklen für den Abrieb des Testhandschuhs.
- b. Schnittfestigkeit: Wert basiert auf der Anzahl der erforderlichen Testzyklen für das Zerschneiden des Testhandschuhs mit konstanter Geschwindigkeit.
- c. Reißfestigkeit: Wert basiert auf der erforderlichen Zugkraft für das Zerreißen des Testhandschuhs.
- d. Stichfestigkeit: Wert basiert auf der erforderlichen Stoßkraft für das Durchstechen des Testhandschuhs mit einer Spitze (Standardgröße).



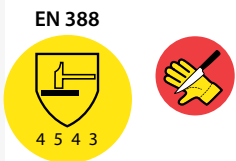
Performance Level Rating						
Test	0	1	2	3	4	5
a. Abrasion resistance (cycles)	< 100	100	500	2000	8000	-
b. Blade cut resistance (factor)	< 1.2	1.2	2.5	5.0	10.0	20.0
c. Tear resistance (newton)	< 10	10	25	50	75	-
d. Puncture resistance (newton)	< 20	20	60	100	150	-



# Gloves

Keep your hands  
protected





# shield

- Polyethylene anti cut glove (HPPE)
- Polyurethane anti cut grip
- Anti cut level 5

8-9-10-11



# construhot

- Polyester glove
- Latex grip

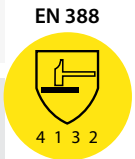
8-9-10-11



# construlow

- Polyester glove
- Latex grip

8-9-10



# allflex

- Nylon-Spandex glove
- PU-Nitril Microfoam grip

8-9-10-11

DMF FREE



# constructo

- Cotton glove
- Latex grip

8-9-10-11



# prosoft

- Polyester glove
- Foamed Nitril grip
- Oil resistant

7-8-9-10-11





EN 388



## concrete

- Cotton glove
- Nitril grip
- Oil resistant

9-10-11



EN 388



## multitask

- Polyeste glove
- Foamed nitril grip
- Oil resistant

7-8-9-10-11



EN 388



## superpro

- Polyester glove
- Foamed Nitril grip
- Oil resistant

7-8-9-10-11



EN 388



## multitask

- Polyeste glove
- Foamed nitril grip
- Oil resistant

7-8-9-10-11



## Marketing Support

CAP  
PSJCAPOP





## Safety Jogger Shop in the Shop

# Sales Team

contact a salesperson in  
your region

Europe	Dieter Roman dieter.roman@safetyjogger.com	Bosnia & Herzegovina, Bulgaria, Croatia, Czech Republic, England, Estonia, Finland, France, Greece, Hungary, Ireland, Italy, Latvia, Lithuania, Macedonia, Moldova, Norway, Poland, Portugal, Romania, Scotland, Serbia, Slovakia, Slovenia, Spain, Sweden, Ukraine.
	Steven Marichael steven.marichael@safetyjogger.com	Belgium, Luxemburg, North- West-France
	Ralf Schlenger ralf.schlenger@safetyjogger.com	Germany
	Davy Nys davy.nys@safetyjogger.com	Austria, Germany, The Netherlands, Switzerland
	Marc Vanderlinden marc.vanderlinden@safetyjogger.com	South-France

Africa	Martin Jiang martin.jiang@cortinachina.com	South Africa, Central Africa, Zambia, Sudan, Israel, Malta, Botswana, Lybia, Kenya, Congo, Ethiopia, Uganda, Tanzania, Angola, Bennin, Madagascar, Togo
North Africa	Jerry Yu jerry.yu@cortinachina.com	Morocco, Algeria, Tunesia, Turkey
Middle East	Martin Jiang martin.jiang@cortinachina.com	Egypt, Nigeria, Mauritius
	John Zhai john.zhai@cortinachina.com	Jordan, Iran, Iraq, Afganistan, Yemen, Jordan, Iran, Lebanon, Oman, Saudi Arabia, Qatar, Azerbaijan,
	Jerry Yu jerry.yu@cortinachina.com	Kuwait, UAE, Bharain
Asia	Leon Chen leon.chen@cortinachina.com	Vietnam, Indonesia, Hongkong, Cambodia, Myarmar, Taiwan, Macau, Laos, Maldives, Mongolia, Bhutan, Nepal, Bangladesh
	Jako Huang jako.huang@cortinachina.com	Malaysia, Singapore, Thailand
South Asia	Jerry Yu jerry.yu@cortinachina.com	Pakistan, India
Far East	Michael Jiang michael.jiang@cortinachina.com	Phillipine, China
Oceania	Jako Huang jako.huang@cortinachina.com	Australia, New Zealand, Fiji, Papua New Guinea, Brunei, Vanuatu, Puea Pahonu, New Caledonia
South America	Lucy Escobar lucy.escobar@cortinachina.com	Chile, Costa Rica, El Salvador, Honduras, Mexico, Colombia, Panama, Uruguay, Dominican Rep, Peru, Ecuador, Caribbean, Guatamala
North America	Kevin Zhou kevin.zhou@cortinachina.com	America, Canada
Russia	Jako Huang jako.huang@cortinachina.com	Russia



## safety jogger international size conversion chart

system	sizes												
EU	35	36	37	38	39	40	41	42	43	44	45	46	47
US	4	4.5	5	6	7	7.5	8	8.5	9	10	11	12	13
UK	3	3.5	4	5	6	7	7.5	8	9	10	10.5	11	12
Japan	22.5	23	24	24.5	25	25.5	26.5	27	28	28.5	29	30	31
Korea	220	225	235	240	245	250	260	265	275	280	285	295	305

## safety jogger certificates

EN20345

AS/NZS2210.3.2009

GOST

ASTM

OHSC

JIS

LA

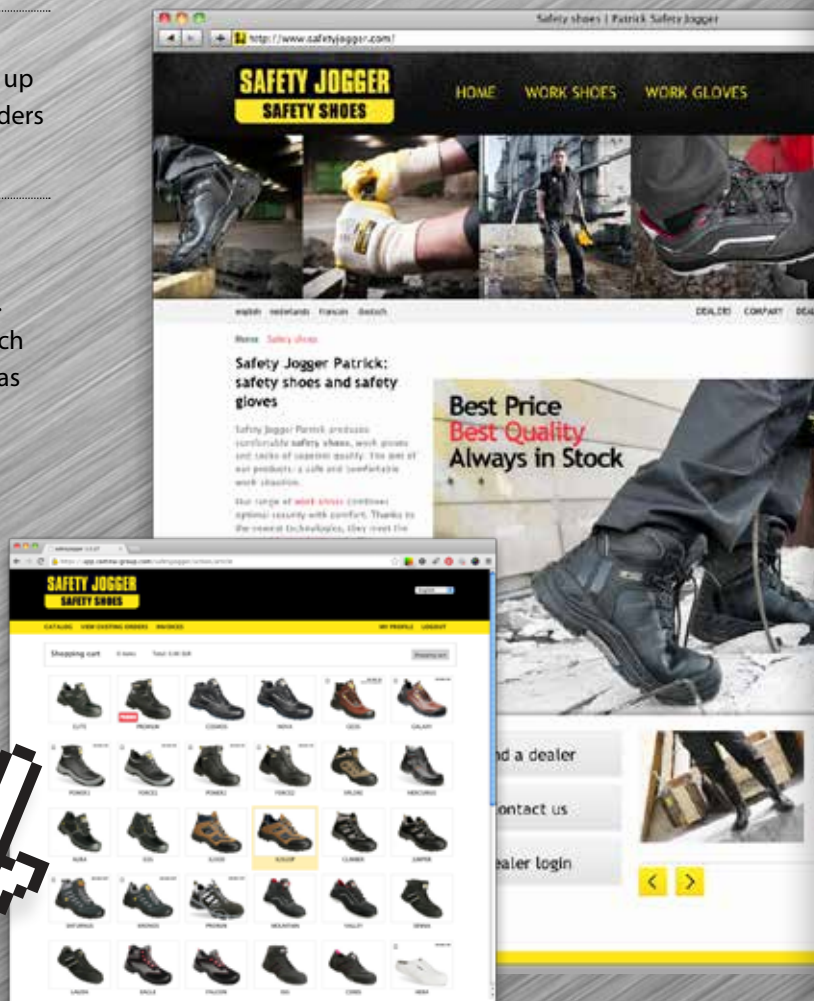


# Order Online

on our website [www.safetyjogger.com](http://www.safetyjogger.com)

Dealers can order online and follow up their history of orders online.

If you want to become a dealer, please contact us. We will get in touch with you as soon as possible.



## SAFETY JOGGER SAFETY SHOES

Safety Jogger is part of the **Cortina Group**

### Europe

Cortina NV  
Meersbloem Melden 42  
9700 Oudenaarde  
Belgium

Phone: (32) 55 33 44 44  
Fax (32) 55 33 56 57  
[info@safetyjogger.com](mailto:info@safetyjogger.com)

### Worldwide

Cortina Group China - Niu Dun Industrial estate  
Shipai, Wang Niu Dun, Dongguan  
Guangdong Province  
China (postal code 523216)

广东省东莞市望牛墩镇石排村牛顿工业区 二楼直销部 (邮编523216)

Phone: (86) 769 3901 8443  
Fax.: (86) 769 3901 8502  
[safetyjogger@cortinachina.com](mailto:safetyjogger@cortinachina.com)

[www.safetyjogger.com](http://www.safetyjogger.com)